

CERTIFIED RECORD OF LAND CORNER MONUMENTATION

History of original corner establishment:
None

*

DIAGRAM
T17S R29E
S30
E1/16---
S31

Description of corner evidence found:
None

Description of monument and accessories I establish to perpetuate the original location of this corner:

Set a 2 1/2 x 28" aluminum monument 22" in the ground in a mound of stone.

T17S R29E
S30

I establish new bearing trees:

E1/16---

A 7" Juniper bears S69 1/4°E, 74.3 ft, scribed E1/16S31BT.

S31

A 7" Juniper bears N6-3/4°E, 71.2 ft, scribed E1/16S30BT.

PLS1918
1988

New BTs have 3/4" brass washers marked PLS1918 attached to the BT blaze, faces and bands painted with red tree marking paint, and BT tags and Attention or Land Survey Monument signs. A steel fence post with Attention or Land Survey Monument sign is driven approximately 3-5 feet from the corner.

Smokey Cadastral Survey, Cont. No. 53-04H1-7-4011

Field Book: FB 4-2

Work accomplished: 7/2/88

Witnesses: Douglas Parsons

Tyler Parsons

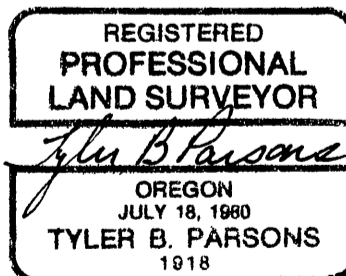
Job No.: 87226

PARSONS SURVEYING

1915 S.E. Stone Street

Corvallis, OR 97333

(503) 752-7515



Office of COUNTY SURVEYOR

County of GRANT

State of OREGON

, I hereby certify that the within instrument was filed in this office for record on the 4 day of Nov, 1988

Robert D. Duggett by _____
(COUNTY OFFICIAL)

(DEPUTY)